



## SCENOGRAPHER OF PERMANENT ECO-URBAN THEATRE



### WHAT'S MY JOB?

### Description

A Scenographer of permanent eco-urban theatre creates stage that are intended to be permanent fixtures within the urban settings. This scenography seamlessly blend sustainability, inclusivity, and artistic excellence within urban landscapes. Through innovative design and the integration of eco-friendly materials, greenery, and accessible elements, they craft sets that not only captivate audiences but also promote environmental awareness and social inclusiveness. With a multidisciplinary approach and a commitment to beauty and functionality, they contribute to a new era of theater design that embraces the principles of the New European Bauhaus, shaping visually stunning and ecologically conscious spaces from degraded urban spaces.

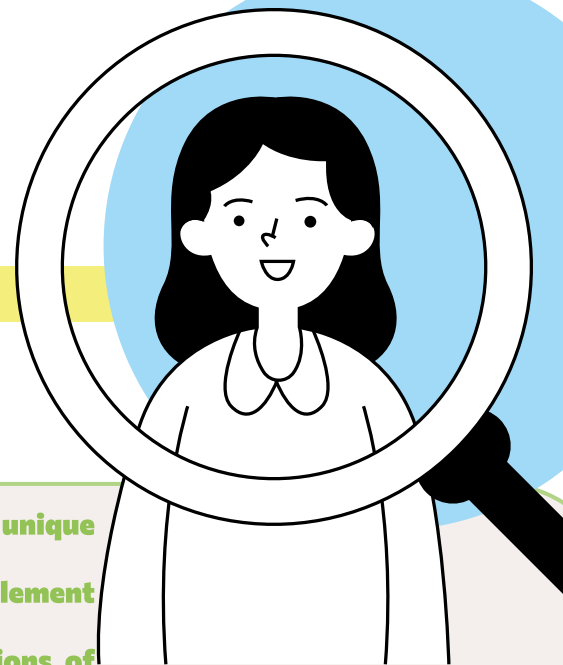
### MY STUDIES

- University degree on Environmental Design or Architecture
- Courses or certification on Scenography or Theater Design
- University degree on Botany or Horticulture
- University degree on Environmental or Civil Engineering
- University degree on Social Sciences or Inclusion Studies
- Certificates on Environmental Management or Public Policy
- Certificates on Visual Arts or Graphic Design



# YOUR SPECIAL TALENTS

## Soft Skills



- **Creativity:** Ability to generate original and innovative ideas to create unique and engaging set designs.
- **Attention to Detail:** Precision and care in details to ensure that every element of the set contributes coherently and accurately to the overall design.
- **Empathy:** Understanding and sensitivity towards the needs and visions of other team members and clients, facilitating harmonious collaboration.
- **Critical Thinking:** Ability to critically analyze situations and make informed decisions that improve the overall quality of the project.
- **Problem-Solving:** Skill in effectively and quickly solving problems, addressing challenges that may arise during the design and construction process.
- **Teamwork:** Ability to work well in a team, coordinating with various professionals to achieve common goals.
- **Leadership:** Capability to lead and motivate the set design team, providing a clear vision and coordinating efforts to achieve common objectives.
- **Communication:** Excellent verbal and written communication skills for collaborating with directors, producers, other designers, and technical team members.
- **Networking:** Ability to build and maintain a professional network in the industry, useful for finding job opportunities and future collaborations

## Hard Skills



- **Botany and Horticulture:** In-depth knowledge of plants, flowers, and gardening techniques, including the selection of hypoallergenic and safe plants for people with particular sensitivities
- **Ecological Knowledge and Biodiversity:** Understanding of ecological principles, including the importance of biodiversity and the environmental needs of plants, ensuring the environment is diverse, safe, and comfortable for all visitors. This includes selecting a variety of plant species to promote a balanced ecosystem and enhance the aesthetic and ecological value of the set design.
- **Inclusive Design:** Understanding inclusive design principles to create environments usable by people of all abilities, including tactile surfaces for the visually impaired and adequate space for wheelchairs, accessible gardens and landscapes.
- **Lighting Design:** Knowledge of lighting techniques specific to plants and flowers and for people with visual disabilities, ensuring the lighting is sufficient, even, and non-glare.
- **Landscape Design:** Experience in garden and landscape design, including techniques for arranging plants to create desired visual and functional effects.
- **Drawing and Illustration:** Skill in manual and digital drawing to create sketches and detailed designs that include the layout of plants and flowers, considering accessible pathways.
- **Scenic Painting Techniques:** Skill in painting techniques to create backgrounds and settings that complement the arrangement of plants and flowers, using colors and contrasts that enhance visibility for people with visual impairments.
- **Design Software:** Proficiency with CAD and 3D modeling software to visualize and plan the layout of plants and flowers, incorporating accessibility elements like ramps, wide paths, and non-slip surfaces.
- **Model Making:** Ability to create physical scale models of sets to visualize the final project.
- **Project Management:** Ability to plan, execute, and oversee set design projects from concept to completion, ensuring timelines and budgets are adhered to while maintaining high standards of quality and sustainability.
- **Risk Management:** Ability to identify potential risks and challenges in the design and construction process, and develop strategies to mitigate these risks, ensuring a smooth and successful project execution.
- **Safety and Regulations:** Knowledge of safety practices and regulations related to the use of plants and flowers in accessible set environments, including attention to potential allergens and health risks, and ensuring compliance with accessibility laws.



## COOL THINGS YOU'LL DO

- **Designing theatres incorporating plants and urban green elements into sets to enhance aesthetics and contribute to the well-being of the surrounding environment. Live plants can be used as scenic elements, creating a direct connection with nature.**
- **Designing theatres that are accessible to people with various abilities, using eco-friendly and inclusive solutions.**
- **Ensuring that all materials and techniques used comply with local environmental regulations**
- **Managing the budget, overseeing personnel (including gardeners, architects, and other specialists), and ensuring that all timelines are met.**