

## SCENOGRAPHER OF PERMANENT ECO-URBAN THEATRE

### THEORETICAL PART



#### Context:

Your city is a vibrant place known for its rich cultural heritage, but it is facing challenges such as environmental degradation and the increasing demand for green spaces. In response, the local government has decided to transform a neglected area into a permanent eco-urban park. This park will serve as a green oasis, focusing on sustainability, biodiversity, and inclusivity. It will include spaces for recreation, community gardens, paths lined with native plants, and educational zones dedicated to environmental awareness.

As a Scenographer of Permanent Eco-Urban Spaces, your role is to lead the design of this multifunctional park. You will combine sustainable design, landscape architecture, and community engagement to create a space that blends nature, art, and public use. The park will include eco-friendly materials as well as the areas for social interaction while promoting biodiversity.

Your community is excited but has several questions: How can sustainable practices be incorporated while maintaining visual appeal? How can it be made accessible for all? What plants should be used to ensure biodiversity and sustainability? How will the park be maintained, and what role will the community play in its upkeep? These are the challenges to address as you move forward with the design and development of the eco-urban park.



#### Related Skills:

### GUIDANCE PART

Problem-Solving

Attention to Detail

Inclusive Design

Management skills

Creativity

Systemic thinking

Ecological Knowledge and Biodiversity

Landscape Design

#### Self-Reflection Questions:

How does the lack of green space in your city affect the community's well-being and the local environment?

What are some sustainable design practices that could be incorporated into this park project to reduce its environmental impact?

What role can the local community play in the planning, design, and long-term maintenance of the park?

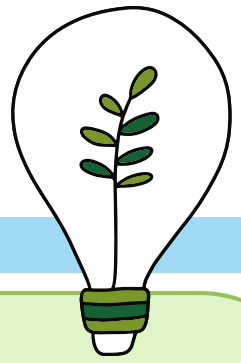
How can community members be encouraged to engage with the park and participate in its upkeep and events?

What types of plants can improve the park's ecosystem while being low-maintenance and resilient to the local climate?

How can the park be designed to provide both green space for recreation and educational areas to raise awareness about environmental issues?

How can you effectively collaborate with architects, horticulturists, and local government officials to ensure that all aspects of the project align with the community's needs?

What challenges might arise during the construction and development of the park, and how would you address them?



## Analysis:

- What is the main problem or need to be addressed?**
- What knowledge and skills are necessary to tackle this situation?**
- What are the strengths and weaknesses of the context in which this problem arises?**

## Planning:

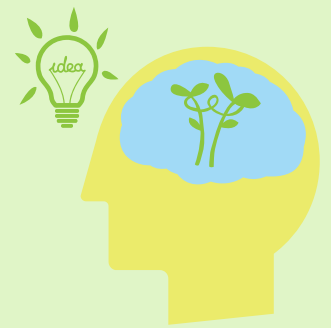
- How can an initial plan be developed to address the identified needs?**
- What material and human resources are available to address the situation?**
- What specific actions should be taken to implement the solution?**

## Suggestions and Prevention:

- What suggestions can be offered to execute the proposed solutions?**
- How can risks or potential future problems related to the solution be prevented?**

## Evaluation:

- What methods can be used to assess the success and sustainability of the implemented solutions?**
- How will the evaluation be conducted, what instruments will be used, and what variables will be analysed?**



## Expected Results after Implementation

**What are the expected outcomes after implementing the solutions?**  
**How is the future context expected to look after our intervention?**  
**What suggestions can be made for future applications, maintenance, or performance improvements?**

## Reflection on Developed Competencies and Project Impact:

**What competencies were developed and what is the potential impact of the project?**  
**What difficulties or strengths were identified during the implementation of this EcoJob in a real context?**  
**How is the coherence of the EcoJob analysed, and how suitable is it in relation to the identified need?**

